


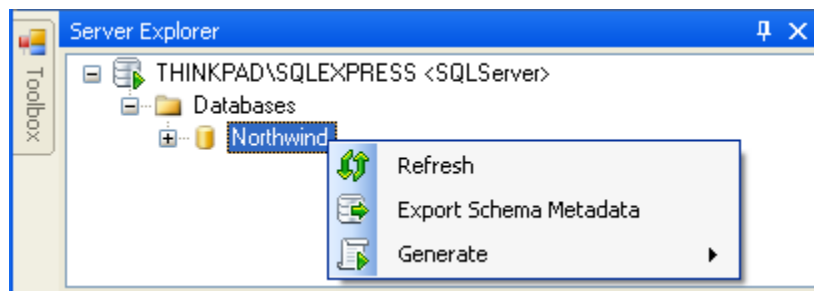
How do I export XML models from database?

Connect to Database Server

1. Click **Connect to Database** button  **Connect to Database** at toolbar.
2. Provide Server Name, User Name and Password.
3. Click **Connect** button.

Launch Schema Export Form

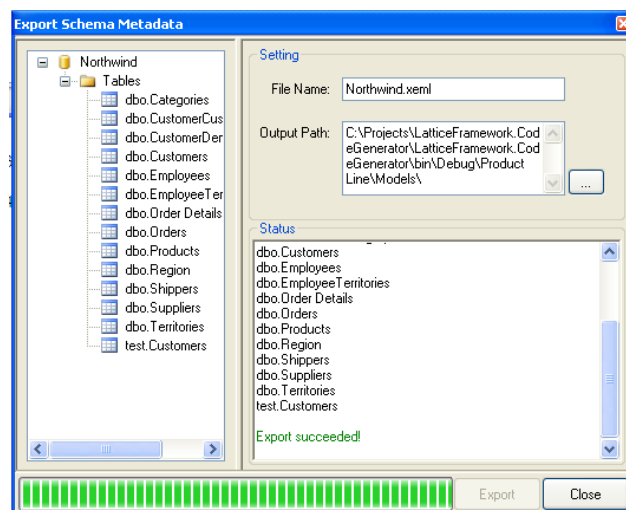
1. Right click **database** node when connected.



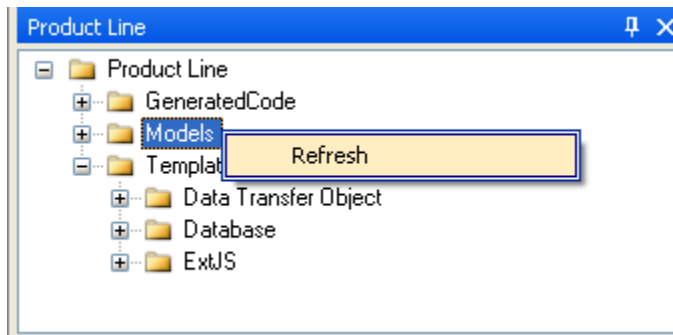
2. Click **Export Schema Metadata** menu item

Export XML Models

1. Click check box beside table node to select or de-select it.
2. Click **Export** button to export models.



3. Check generation status at Rich Text box.
4. Right click Models node, and then **Refresh** button.



5. Double click generated file to open it at Entity Editor.