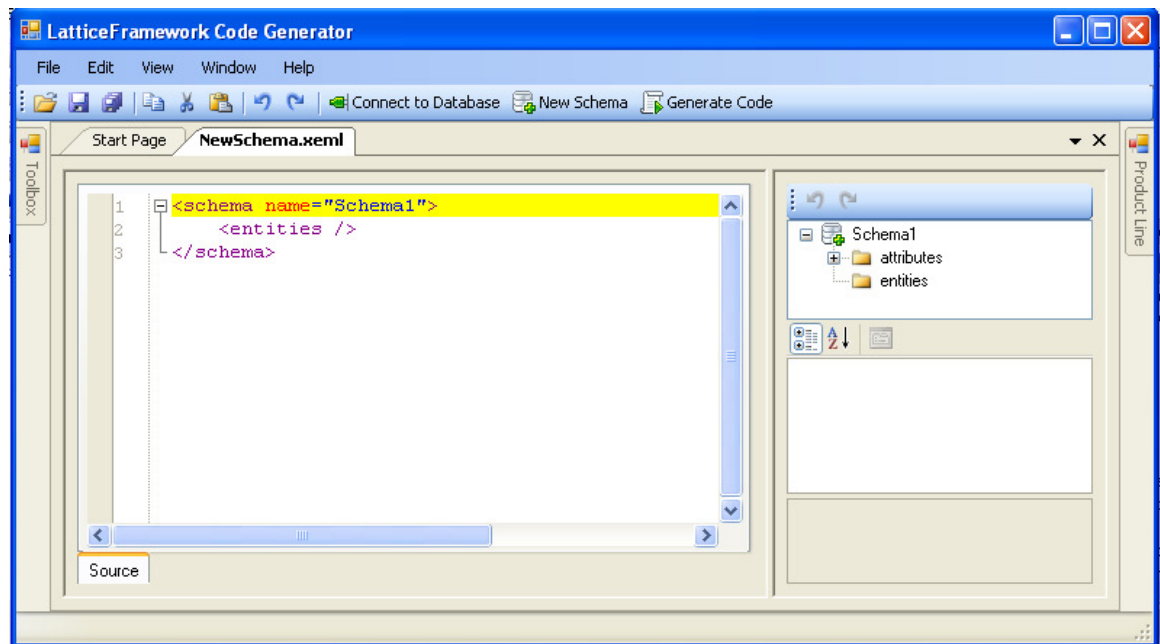


How do I create XEML model?

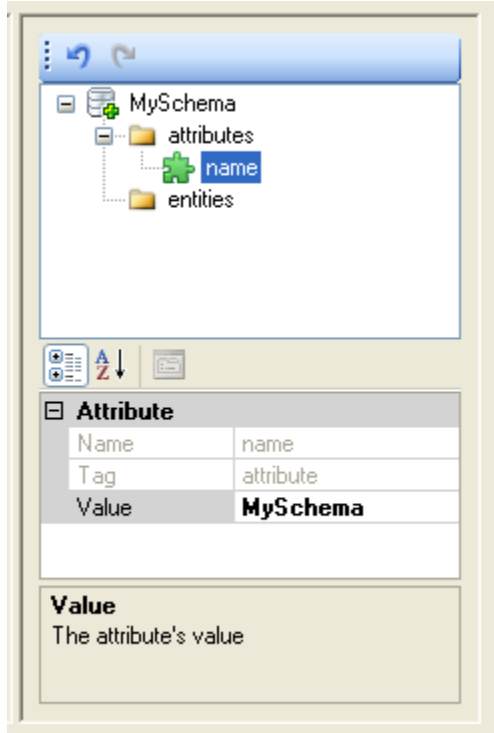
This tutorial will show you how to create a model for a simple Order Management system with three business entities: Customer, Order and OrderLine. A Customer is associated with a one-to-many Order. This model can be easily extended to include new business entities and relationships using the standard toolbox, and it can be configured using the properties window. You can find the complete model under Models directory named OrderManagement.xml.

Create a new schema

1. Click **New Schema** button  **New Schema** at toolbar.

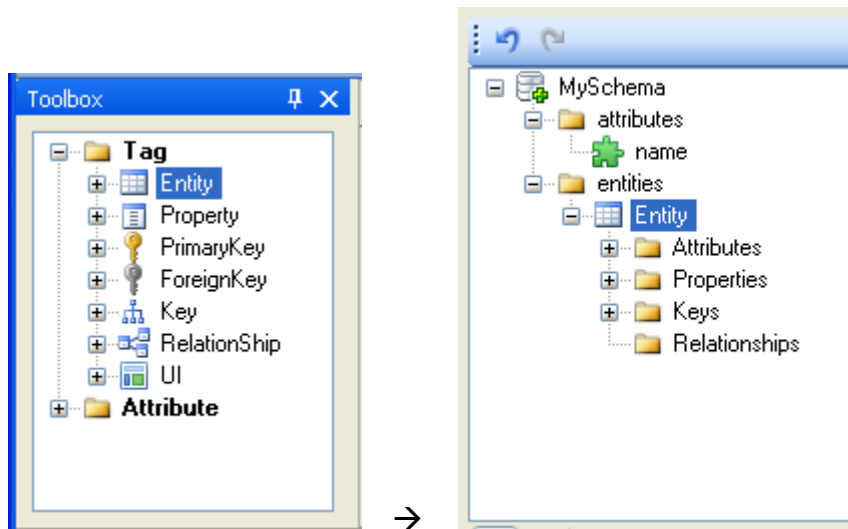


2. Expand **attributes** node, and then select **name** attribute.
3. Change 'Schema1' to 'MySchema' at Properties window.

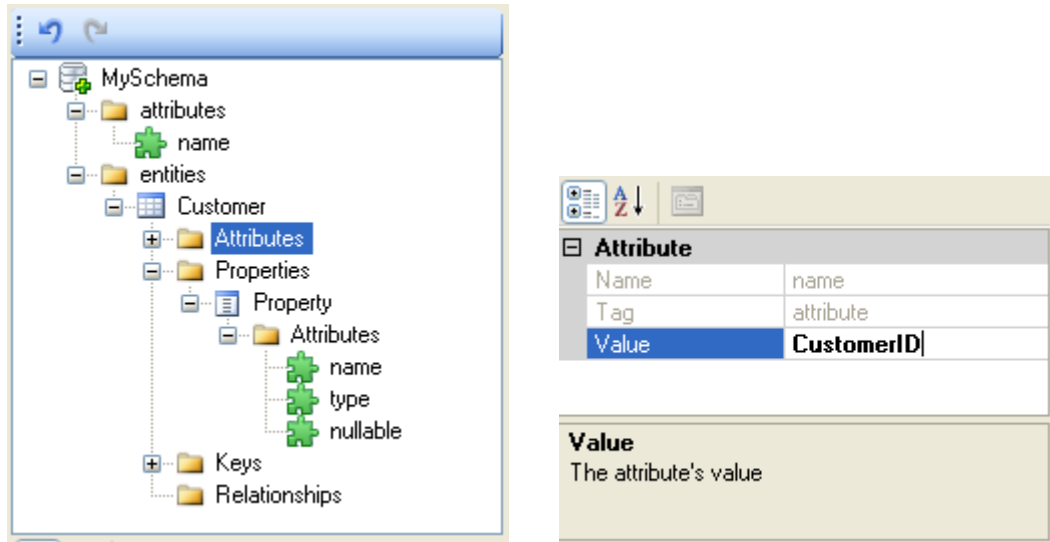


Add a new Entity

1. Drag **Entity** item from toolbox and drop to **entities** node at Tree



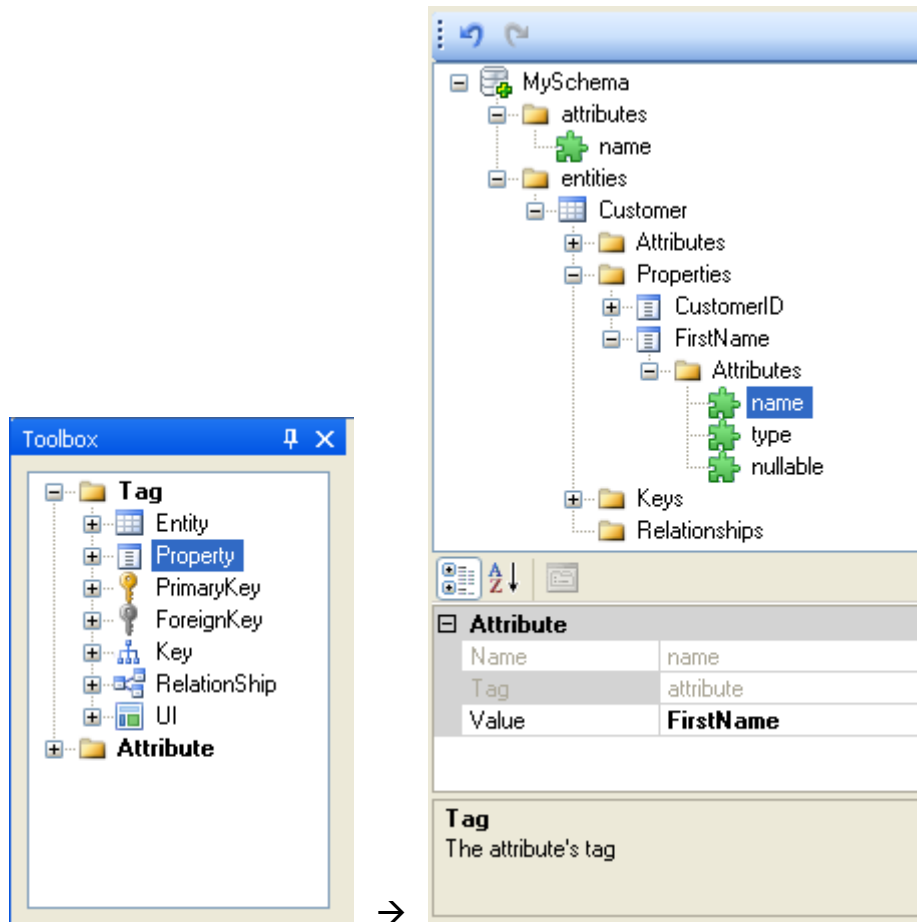
2. Expand **attributes** node, and then select **name** attribute.
3. Change 'entity' to 'Customer' at Properties window.
4. Expand Properties, Property, and then attributes node under Customer entity.



5. Select name attribute and change it to CustomerID
6. Select type attribute and change it to int
7. Select nullable attribute and change it to false

Add a new Property

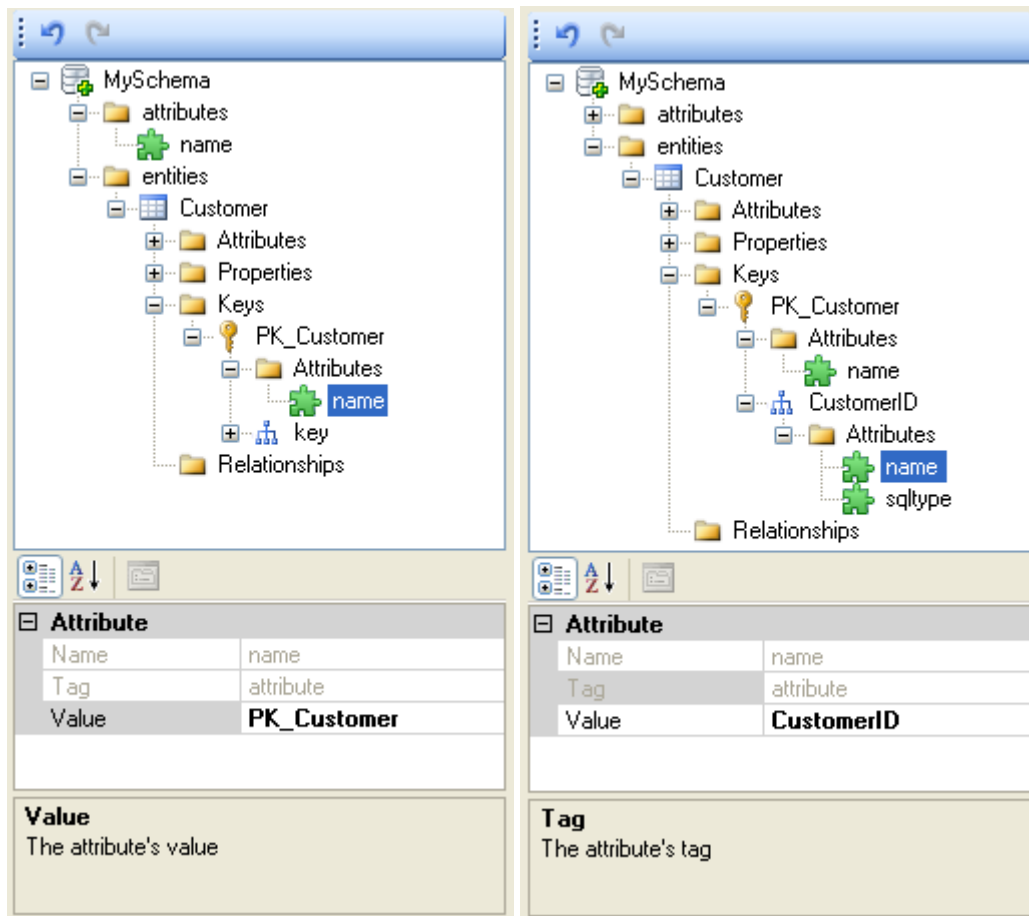
1. Drag **Property** item from toolbox and drop to **properties** node under Customer entity.



2. Select name attribute and change it to FirstName.
3. Repeat above steps to add LastName, Address, City, State, Zip and Phone properties.

Define Primary Key

1. Expand Keys node, then PrimaryKey and Attributes under Customer entity.
2. Select name attribute and change it to PK_Customer.

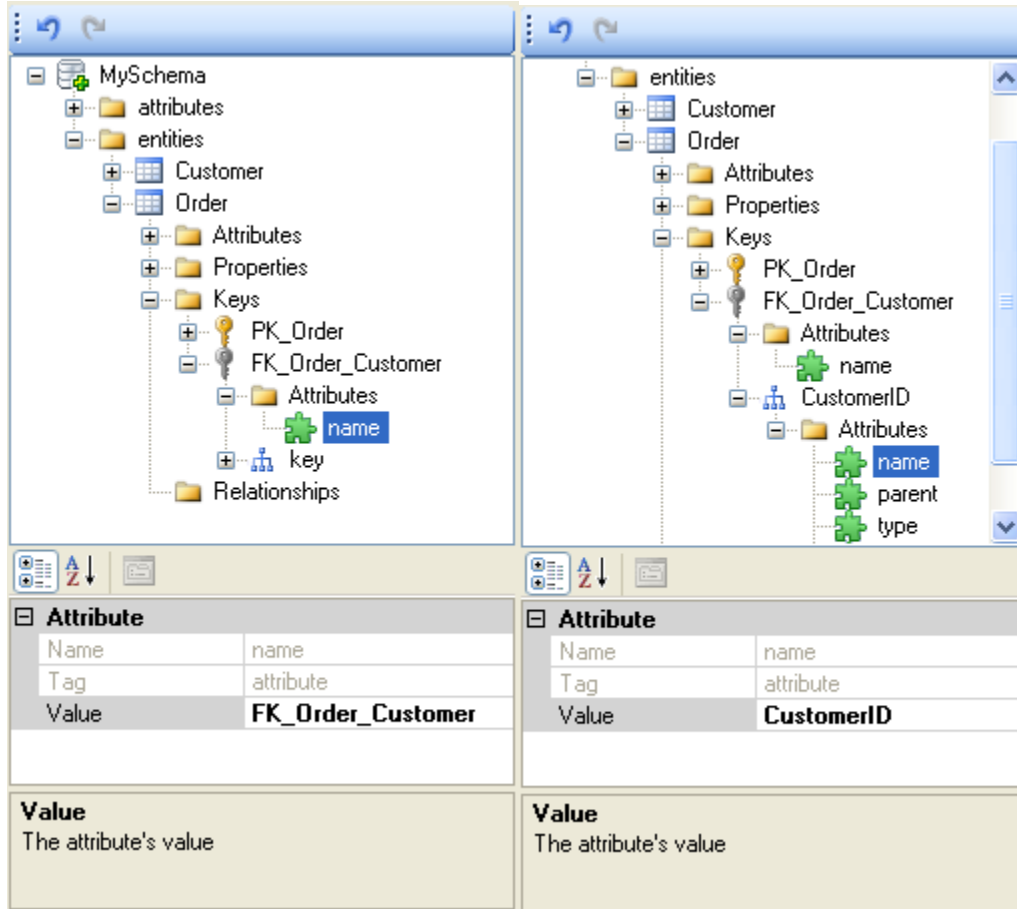


3. Expand Key node, and then Attributes node under PK_Customer.
4. Select name attribute and change it to CustomerID.

Repeat above steps to add a new Order entity with OrderID, CustomerID and OrderDate properties.

Add a Foreign Key

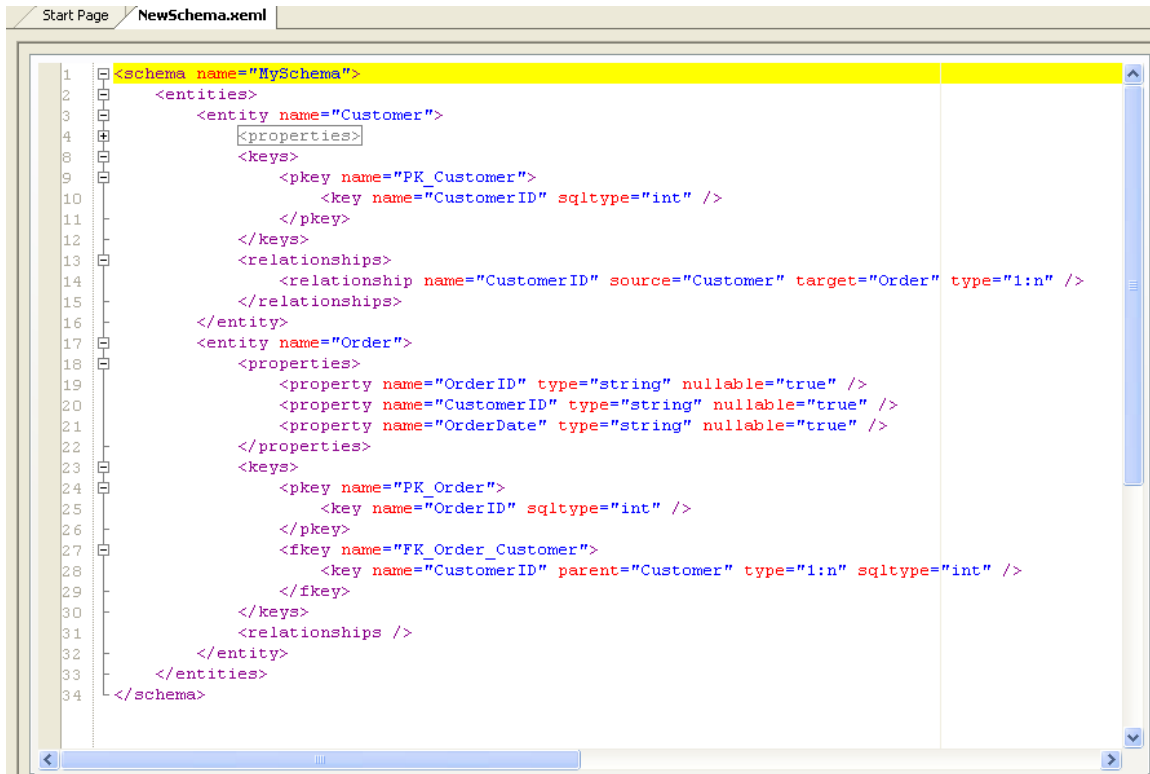
1. Drag **ForeignKey** item from toolbox and drop to **Keys** node under Order entity.
2. Expand Attributes node and select name attribute.
3. Change value of name attribute to FK_Order_Customer.
4. Expand key node under FK_Order_Customer node
5. Change value of name attribute to CustomerID
6. Change value of parent attribute to Customer.



Add a Relationship

1. Drag **Relationship** item from toolbox and drop to **Relationships** node under Customer entity.
2. Expand Relationship node and then Attributes node
3. Change value of name attribute to CustomerID
4. Change value of source attribute to Customer
5. Change value of target attribute to Order
6. Keep value of type attribute as 1:n

The complete XML looks like below:



The screenshot shows the LatticeFramework Studio interface with a file named 'NewSchema.xeml' open. The main editor displays an XML schema definition for 'MySchema'. The schema includes two entities: 'Customer' and 'Order'. The 'Customer' entity has a primary key 'PK_Customer' with the attribute 'CustomerID' of type 'int'. The 'Order' entity has three properties: 'OrderID' (string, nullable), 'CustomerID' (string, nullable), and 'OrderDate' (string, nullable). It also has a primary key 'PK_Order' with the attribute 'OrderID' of type 'int'. A foreign key 'FK_Order_Customer' is defined with the attribute 'CustomerID' of type 'int', linking to the 'Customer' entity. A relationship 'CustomerID' is defined between 'Customer' and 'Order' with a cardinality of '1:n'.

```
1 <schema name="MySchema">
2   <entities>
3     <entity name="Customer">
4       <properties>
5       </properties>
6       <keys>
7         <pkey name="PK_Customer">
8           <key name="CustomerID" sqltype="int" />
9         </pkey>
10      </keys>
11      <relationships>
12      </relationships>
13    </entity>
14    <entity name="Order">
15      <properties>
16        <property name="OrderID" type="string" nullable="true" />
17        <property name="CustomerID" type="string" nullable="true" />
18        <property name="OrderDate" type="string" nullable="true" />
19      </properties>
20      <keys>
21        <pkey name="PK_Order">
22          <key name="OrderID" sqltype="int" />
23        </pkey>
24        <fkey name="FK_Order_Customer">
25          <key name="CustomerID" parent="Customer" type="1:n" sqltype="int" />
26        </fkey>
27      </keys>
28      <relationships />
29    </entity>
30  </entities>
31 </schema>
```